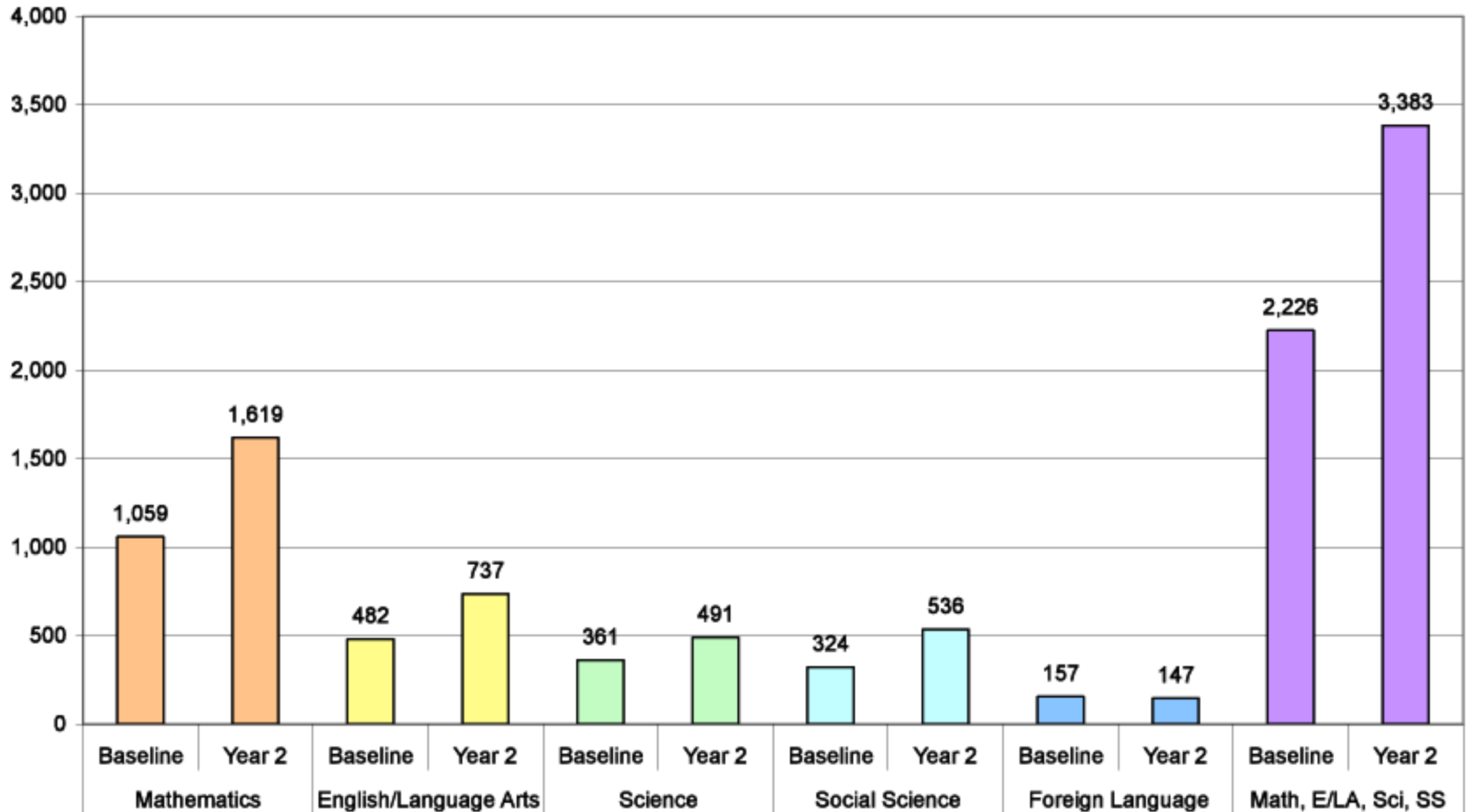
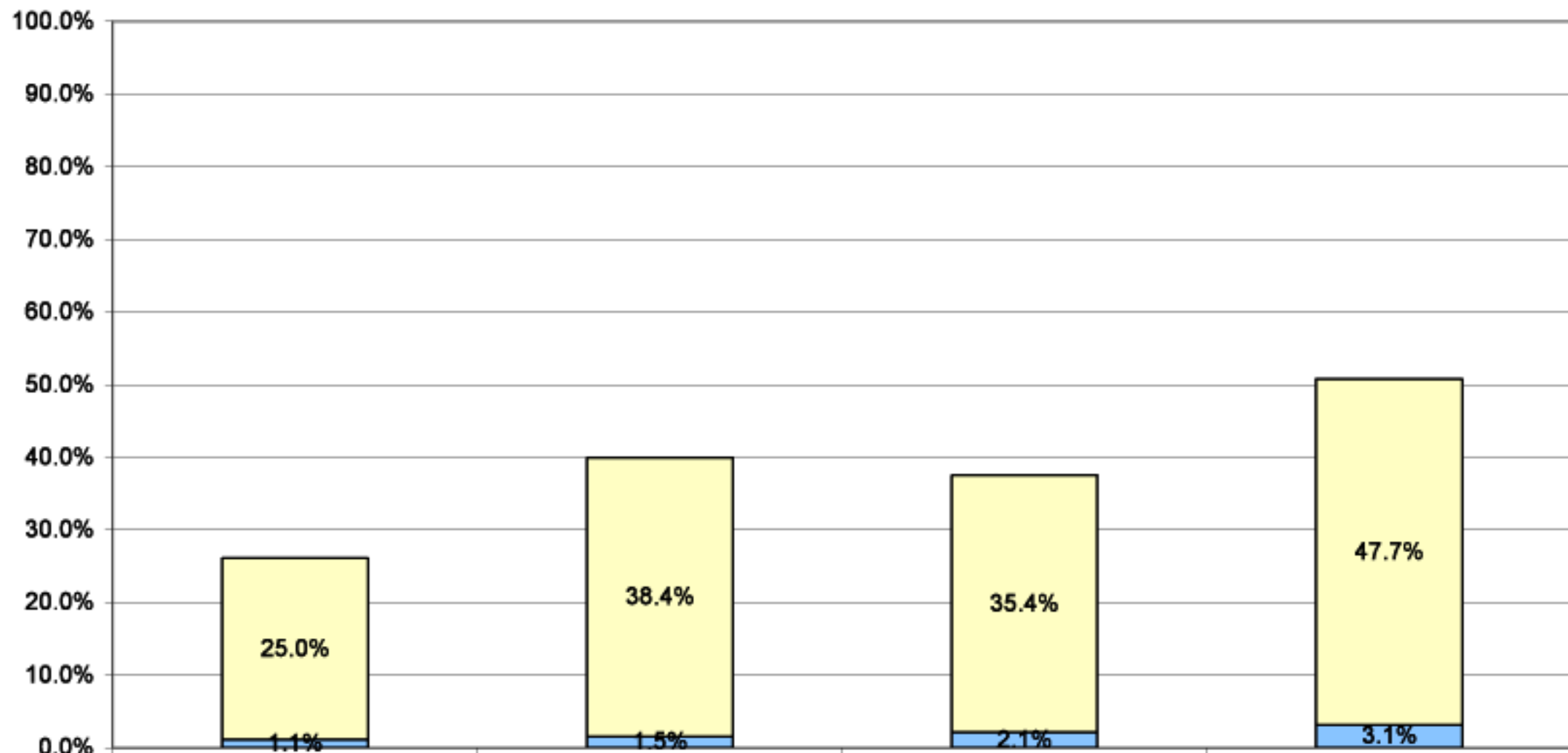


Cohorts 1 - 6
Number of Advanced Course Sections
Baseline to Year 2



Cohorts 1 -6
Percents of Grade 8 Students Taking Algebra 1 & Geometry
Baseline to Year 2



Algebra 1	25.0%	38.4%	35.4%	47.7%
Geometry	1.1%	1.5%	2.1%	3.1%

ADVANCED COURSES OFFERED, Cohorts 1-6

Average number of sections of advanced courses offered, and number and percent of schools offering them, disaggregated by Subject, School Year

Cohort	Number of Schools	School Year	Mathematics			English/Language Arts			Science			Social Science			Foreign Language		
			Number of Schools	Percent of Schools	Number of Advanced Sections	Number of Schools	Percent of Schools	Number of Advanced Sections	Number of Schools	Percent of Schools	Number of Advanced Sections	Number of Schools	Percent of Schools	Number of Advanced Sections	Number of Schools	Percent of Schools	Number of Sections
1 & 2	31	1999-2000	24	78%	120	9	29%	70	10	32%	58	5	16%	33	6	19%	33
		2000-2001	28	90%	189	17	55%	102	16	52%	101	5	16%	34	12	39%	32
		2001-2002	29	94%	210	18	58%	115	14	45%	69	13	42%	101	12	39%	29
		Change	5	16%	90	9	29%	45	4	13%	11	8	26%	68	6	20%	-4
		% Change	21%	21%	75%	100%	100%	64%	40%	41%	19%	160%	163%	206%	100%	105%	-12%
3	17	2000-2001	14	82%	112	13	77%	68	8	47%	36	3	18%	11	6	35%	20
		2001-2002	17	100%	133	17	100%	107	12	71%	59	12	71%	68	6	35%	23
		2002-2003	17	100%	191	17	100%	127	12	71%	73	13	77%	75	5	28%	27
		Change	3	18%	79	4	23%	59	4	24%	37	10	59%	64	-1	-7%	7
		% Change	21%	22%	71%	31%	30%	87%	50%	51%	103%	333%	328%	582%	-17%	-20%	35%
4	30	2001-2002	27	90%	282	21	70%	173	15	50%	135	13	43%	128	15	50%	36
		2002-2003	29	97%	352	24	80%	230	18	60%	149	16	53%	154	15	50%	41
		2003-2004	29	97%	379	27	90%	233	19	63%	144	18	60%	157	10	33%	38
		Change	2	7%	97	6	20%	60	4	13%	9	5	17%	29	-5	-17%	2
		% Change	7%	8%	34%	29%	29%	35%	27%	26%	7%	38%	40%	23%	-33%	-34%	6%
5	33	2002-2003	31	94%	219	19	58%	69	11	33%	48	15	46%	61	7	21%	43
		2003-2004	31	94%	281	21	64%	104	11	33%	68	15	46%	71	6	18%	23
		2004-2005	30	91%	355	21	64%	119	13	39%	79	15	46%	79	4	12%	21
		Change	-1	-3%	136	2	6%	50	2	6%	31	0	0%	18	-3	-9%	-22
		% Change	-3%	-3%	62%	11%	10%	72%	18%	18%	65%	0%	0%	30%	-43%	-43%	-51%
6	29	2003-2004	29	100%	326	19	66%	102	16	55%	84	14	48%	91	7	24%	25
		2004-2005	29	100%	453	20	69%	114	16	55%	90	16	55%	98	6	21%	26
		2005-2005	29	100%	484	22	76%	143	18	62%	126	17	59%	124	6	21%	32
		Change	0	0%	158	3	10%	41	2	7%	42	3	11%	33	-1	-3%	7
		% Change	0%	0%	48%	16%	15%	40%	13%	13%	50%	21%	23%	36%	-14%	-13%	28%

ADVANCED COURSES OFFERED, Cohorts 1-6

Change and percentage of change from baseline year to year 2 of participation.

Cohorts	Number of Schools	School Year	Math			Language			Science			Social Science			Foreign Language		
			Number of Schools	Percent of Schools	Number of Advanced Sections	Number of Schools	Percent of Schools	Number of Advanced Sections	Number of Schools	Percent of Schools	Number of Advanced Sections	Number of Schools	Percent of Schools	Number of Advanced Sections	Number of Schools	Percent of Schools	Number of Sections
1-6	140	Baseline	125	89%	1059	81	58%	482	60	43%	361	50	36%	324	41	29%	157
		Year 1	134	96%	1408	99	71%	657	73	52%	467	64	46%	425	45	32%	145
		Year 2	134	96%	1619	105	75%	737	76	54%	491	76	54%	536	37	26%	147
		Change	9	6.4%	560	24	17.1%	255	16	11.4%	130	26	18.6%	212	-4	-2.9%	-10
		% Change	7%	7.2%	53%	30%	29.6%	53%	27%	26.7%	36%	52%	52.0%	65%	-10%	-9.8%	-6%
		TOTALS			3,027			1,394			958			961			292

ADVANCED COURSES OFFERED, Cohorts 1-6

Cohorts	Number of Schools	School Year	Combined Results for Mathematics, English/Language Arts, Science, & Social Science			
			Potential: Number of Schools times Five Subjects	Actual: Total Number of Schools	Percent of Potential Number of Schools	Number of Advanced Sections
1-6	140	Baseline	560	316	56.4%	2,226
		Year 1	560	370	66.1%	2,957
		Year 2	560	391	69.8%	3,383
		Change		75	13.4%	1,157
		% Change		23.7%	23.7%	52.0%
				Total	6,340	

ENROLLMENT IN ALGEBRA AND GEOMETRY, Cohorts 1-6

Number and percent of Grade 8 students enrolled in Algebra and Geometry, number and percent of schools offering them, disaggregated by Subject, School Year, and Program Cohort, compared to State

Cohort	Number of Schools	School Year	Total Grade 8 STAR Enrollment	Algebra					Geometry				
				Number of Schools	Percent of Schools	Number of Students in Algebra	Percent of Students	State % of Total Students	Number of Schools	Percent of Schools	Number of Students in Geometry	Percent of Students	State % of Total Students
1 & 2	31	1999-2000	12,379	23	74%	1,664	13.4%	20.4%	5	16%	162	1.3%	1.0%
		2000-2001	13,075	26	84%	2,100	16.1%	24.9%	6	19%	283	2.2%	1.3%
		2001-2002	13,157	28	90%	2,910	22.1%	28.7%	7	23%	266	2.0%	1.9%
		Change	778	5	16%	1,246	8.7%	8.3%	2	6%	104	0.4%	0.9%
		% Change	6%	22%	22%	75%	65%	40.7%	40%	40%	64%	31%	90.0%
3	17	2000-2001	8,594	17	100%	2,010	23.4%	24.9%	7	41%	148	1.7%	1.3%
		2001-2002	8,629	17	100%	1,752	20.3%	28.7%	4	24%	126	1.5%	1.9%
		2002-2003	8,936	17	100%	2,394	26.8%	31.8%	6	35%	198	2.2%	2.1%
		Change	342	0%	0%	384	3.4%	6.9%	-1	-6%	50	0.5%	0.8%
		% Change	4%	0%	0%	19%	14.5%	27.7%	-14%	-14%	34%	29%	61.5%
4	30	2001-2002	11,724	27	90%	2,612	22.3%	29.0%	3	10%	142	1.2%	1.9%
		2002-2003	12,005	29	97%	3,007	25.0%	31.8%	4	13%	196	1.6%	2.1%
		2003-2004	12,089	28	93%	3,719	30.8%	37.8%	9	30%	193	1.6%	2.5%
		Change	365	100%	3%	1,107	8.5%	8.8%	6	20%	51	0.4%	0.6%
		% Change	3%	4%	4%	42%	38.1%	30.3%	200%	200%	36%	31.8%	31.6%
5	32	2002-2003	10,678	27	84%	2,298	21.5%	31.8%	1	3%	25	0.2%	2.1%
		2003-2004	11,243	30	94%	4,182	37.2%	37.8%	4	13%	74	0.7%	2.5%
		2004-2005	11,145	31	97%	6,963	62.5%	44.7%	6	19%	34	0.3%	2.7%
		Change	467	4	13%	4,665	41.0%	12.9%	5	16%	9	0.1%	0.6%
		% Change	4%	15%	15%	203%	190.3%	40.6%	500%	500%	36%	30.3%	28.6%
6	29	2003-2004	10,495	27	93%	4,908	46.8%	37.8%	10	34%	125	1.2%	2.5%
		2004-2005	10,008	28	97%	5,270	52.7%	44.7%	10	34%	161	1.6%	2.7%
		2005-2006	9,356	29	100%	5,034	53.8%	46.8%	14	48%	122	1.3%	3.0%
		Change	-1,139	2	6.9%	126	7.0%	9.0%	4	13.8%	-3	0.1%	0.5%
		% Change	-10.9%	7.4%	7.4%	2.6%	15.1%	23.8%	40.0%	40.0%	-2%	9.5%	20.0%

ENROLLMENT IN ALGEBRA AND GEOMETRY, COHORTS 1-6

Change from baseline year to year 2 of participation

Cohorts	Number of Schools	School Year	Total Grade 8 STAR Enrollment	Algebra					Geometry				
				Number of Schools	Percent of Schools	Number of Students in Algebra	Percent of Students	State % of Total Students	Number of Schools	Percent of Schools	Number of Students in Algebra	Percent of Students	State % of Total Students
1-6	139	Baseline	53,870	121	87%	13,492	25.0%	35.4%	26	19%	602	1.1%	2.1%
		Year 1	54,960	130	94%	16,311	29.7%	41.1%	28	20%	840	1.5%	2.6%
		Year 2	54,683	133	96%	21,020	38.4%	47.7%	42	30%	813	1.5%	3.1%
		Change	813	12	8.6%	7,528	13.4%	12.3%	16	11.5%	211	0.4%	1.0%
		% Change	1.5%	9.9%	9.9%	55.8%	53.5%	34.8%	61.5%	61.5%	35%	33.0%	46.0%
		Totals	163,513			50,823	31.1%				2,255	1.4%	